



The Launceston Preparatory School

Truth and Happiness

NEWSLETTER

Thursday 29th February 2024

From the Staff – Alice Batten



The Launceston Preparatory School's Early Learning and Kindergarten program aligns with the Australian Government's Early Years Learning Framework (EYLF). Recently updated to reflect current practices and knowledge, the EYLF supports educators in fostering children's learning, development, and wellbeing.

Central to the framework is the concept of **belonging**, **being**, and **becoming**, recognising children's connections to family, community, culture, and place from birth. These relationships, particularly within families, serve as the foundation for children's early learning and development, instilling a sense of security that enables them to explore, try new things, and learn confidently.

As an Early Years teacher, I appreciate how the framework's core values extend beyond early childhood, influencing various aspects of children's lives and development.

Belonging emphasises the importance of relationships and affirming experiences in shaping identities.

Being acknowledges childhood as a time for self-discovery, meaningful engagement with the world, and navigating life's complexities.

Becoming highlights the continuous growth and change children experience, emphasizing collaboration among educators, families, and children to support their development.

While the framework is primarily used in the Early Years, its principles resonate throughout our school community, enriching the educational journey of all students.

Alice Batten (Early Learning Teacher)

References: www.acecqa.gov.au/nqf/national-law-regulations/approved-learning-frameworks

Early Learning



The Early Learners are actively engaging in various constructed games, with rules to learn and follow. The children are learning how to play fairly, take turns and listen carefully.

A VERY Special Assembly

This week, we're celebrating a momentous event as our beloved staff member, Mr. Payne, ties the knot! With a trial ceremony, fun Q&A session, and a rose petal exit the centre piece of this week's assembly, we're thrilled for him and his soon-to-be wife. Wishing them endless joy and a big family—maybe even more than the 146 kids Mr. Payne says he already has! Please join us in congratulating Alex and Jane.

Congrats, Mr. & Mrs. Payne!



ANNUAL GENERAL MEETING

On 20th March, The Launceston Preparatory School Association will hold its Annual General Meeting. This is when the Board and Principal report to members on the progress and development of the school during the preceding calendar year. The meeting generally lasts around one hour.

All parents and friends of the school are welcome to attend this meeting - you can attend as an observer but you are also invited to apply for membership of the Association that administers The Launceston Preparatory School under standard rules and articles of association. Membership of the Association currently costs \$5.00 per annum and is open to all friends of the school comprising current and former parents, educators and supporters from the local community.

In conjunction with the Principal, the Board has oversight of all issues relating to risk management, compliance with legal obligations, financial accountability and policy development. The Principal has responsibility for managing educational issues, students, staff and parent involvement. The educational progress and direction of the school is primarily the Principal's domain.

The Annual General Meeting of The Launceston Preparatory School Association will be held downstairs in the Multi-Purpose Hall on Wednesday, 20th March from 7.30pm. We hope to see you there!

Craig Stenton
Board Chair



Socratic Seminar – Groups 2 and 3

Regarding page 27 of "Blueback" by Tim Winton, where Abel kept Blueback as a secret, we explored:

- Reasons behind Abel's decision.
- Personal inclination to keep a similar secret and rationale.
- Behaviour if discovering a new animal species or spotting a thylacine.
- Differentiating factors between good and bad secrets.

Leonie McNair

Talented former student

In the early years of our school, Sarah Gunton was one of the small cohorts of upper primary students. At the age of 15, Sarah left Queechy High School to attend the Moscow Conservatorium where she honed her skills as a concert pianist. Sarah then studied in Germany before settling in Paris where she now lives with her husband and son.

With family still in Launceston, Sarah returns each year to perform FREE for her hometown audience. We have always kept in touch with Sarah and love attending her concerts, as we did last weekend. What a privilege to listen to this extraordinarily talented former student play music by the great composers! She still takes a keen interest in The LPS!



Leonie McNair and Margaret Turner

Prep/One Science

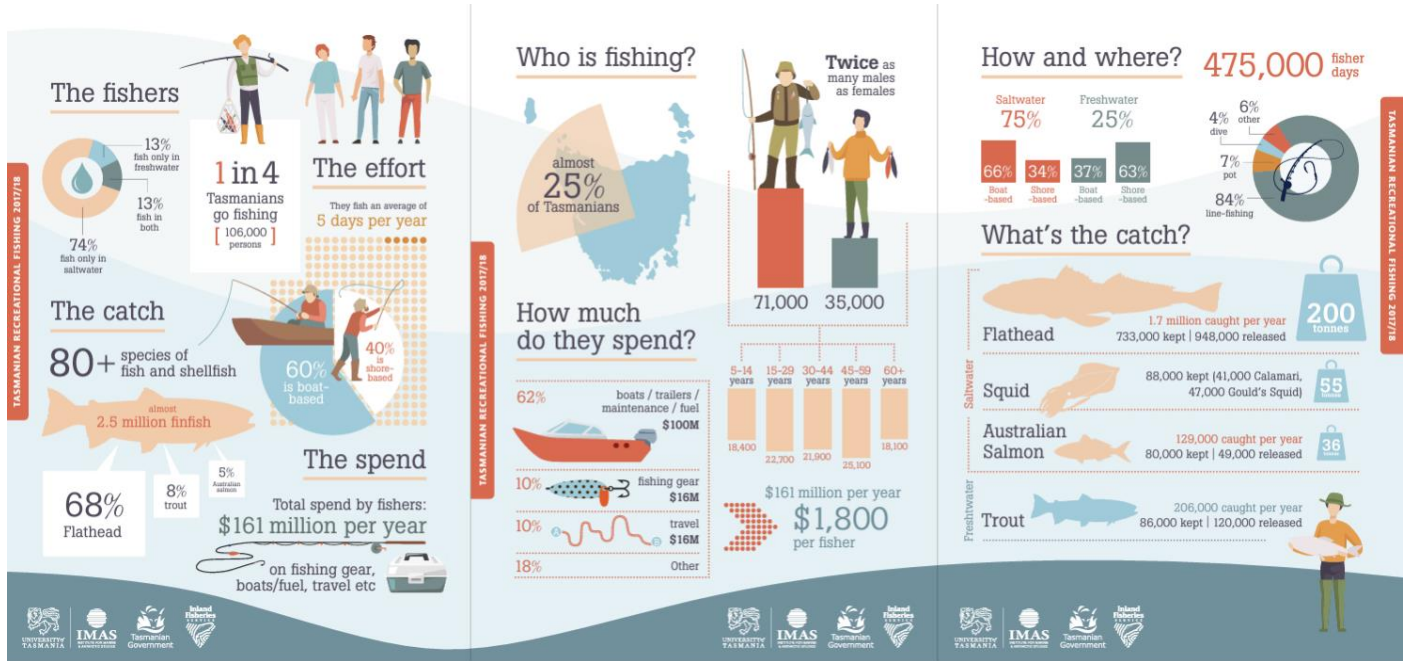
This week our science investigations have us exploring the features of living things. We have carefully observed Mrs McGuire's Sunflower plant. We have noticed the first flower at the top has lost its petals while the smallest flower is still a bud. We used loose parts to make our own model of a sunflower with a stem, leaves, flowers and roots.

Kellie Cook



Senior Mathematics

This week in Senior Mathematics, students explored data related to fishing activities in Tasmania. The data came from the Institute for Marine and Antarctic Studies (IMAS), who conduct recreational fishing surveys across Tasmania every five years. The infographic created by IMAS provide insights into who goes fishing, how often they fish, where they fish, what they catch and how much money they spend.



Infographic from <https://www.imas.utas.edu.au/research/fisheries-and-aquaculture/fisheries/recreational-fishing-research#Rec-survey>

The children formulated questions that the IMAS researchers may have posed in their survey so that we could create our own 'Fishing in The LPS Seniors' families' survey. The children will be surveying their families this week (one survey per family), and next week, they will explore creative ways to present their findings.

Thank you to the Groups 4-6 families who have already completed the survey!

Mel Andrews



Socratic Seminar – Groups 4-6

In Chapter 3 of "Blue Fin" by Colin Thiele, we learn about the practical joke Snook and his friends planned for the Tunarama festival in Port Lincoln, prompting discussion on:

- The nature of the practical joke involving the discovered tuna.
- Distinctions between jokes and practical jokes.
- Risks associated with practical jokes.
- Whether the boys should execute their plan, providing reasons.
- Instances when practical jokes are appropriate.

Leonie McNair

Welcome to 2024! Picnic / Parents of The LPS

Are you a parent eager to enhance each school year? Joining The Parents of The LPS may be just what you're looking for! Our mission is to foster a sense of belonging and support within our school community. We're seeking committee members to:

1. Fundraise for charity and school resources (matching House Fundraiser endeavours).
2. Enhance the learning experience through guest speakers and real-world opportunities (aligning to our termly theme).
3. Organise community events (like last week's).

Exciting, right? Contact the office for more information.

A big thank you to those who attended our Welcome to 2024! Picnic. It was a fantastic event, showcasing our values and bringing us closer together. Your contributions made it possible and are truly appreciated. We cannot thank those who offered a little (or a lot) enough. It means the world.



***Please contact the office if you would like personal copies of your child's / family's photos taken on the night**

Sport Swimming Captains

Congratulations for our newest Swimming Captains – Arkie Ivory and Jack Gray! Yesterday, Mr Payne announced both our Swimming Squad for next week's NIJSSA event on Friday, and our two ecstatic leaders for the day. Mr Payne stated, "They both swam like fish and the two led with passion and enthusiasm" Jack was the stand out performer for the day, with Arkie showcasing a wonderful humility and determination, carrying her Ossa peers with pride. We wish the team, and their captains the best of luck next week!



SPORT REPORTS



The LPS tennis team had their first competition round on Friday, 23rd February. We played doubles against Scotch Oakburn College. Max B was invited out the front at the beginning to demonstrate the correct way to play. He has great skills and did a fabulous job. We then proceeded to play 4 rounds of doubles against 4 different teams each. It was fun learning the rules and adjusting to each different team we had to play against. We displayed very good sportsmanship and everyone improved as the afternoon went on. Special mention to the Grade 4s who were playing rostered sport for the first time – they were amazing! We all looked fabulous and felt proud to be wearing our new sports tops.

Cricket

The LPS mixed cricket team played Launceston Christian School at NTCA ground.

The final score was 58-88, in their favour. Although we lost, we showed great sportsmanship. Shout out to Archie who top-scored with 9 runs. Whilst Henry Hannay took immaculate catches.

Henry Holloway

Speedball

The LPS Girl's speedball team 'The Legends' played Scotch Oakburn College at Scotch Park.

*I think we did really well. Well done to our goal scorers Esther, Olive, Belle and myself. The score was 5-12 their favour. Even though we lost we still kept our teamwork and our sportsmanship was great. **Tilly Barnes***

The LPS Boy's speedball team played Launceston Christian School at Scotch Park.

We played well and the score was 5/4 our favour. Shout out to Xavier, Oli and myself for scoring.

Ryan Bonny

Brixhibition 2024



The LPS has been running the Brixhibition for 5 years and will do so again on **Wednesday, 20th March**. We will once again incorporate our own LPS category for any **adults** who wish to enter - parents, friends of the school, Board members, teachers, grandparents, etc. We hope that having the adults involved this year won't create too many arguments at home!

The idea behind this competition is to encourage people to build **creatively** with Lego. There are many wonderful sets that have instructions for how to build them. However, competition organisers are keen for people to create something unique with their Lego. Over the years we've had children build their shack, underwater worlds, a flower, magical fairy wonderlands, animals, their favourite holiday destination, a character from their favourite movie or novel, etc. It is up to you, your imagination, and the amount of Lego that you have at home!

The Brixhibition organisers have added a special new **Brixhibition Design Competition**. Children are invited to draw a real or imaginary item that can be created from Lego. Each design is to be drawn in pencil, pen, or crayon on A4 size paper. The school winner will go into the overall Brixhibition exhibit against winners from other schools around the state. **If their drawing is selected by the competition organisers, their design would be made from Real Lego Bricks.** How exciting!

The age categories are:

- Early Learning -Prep
- Grade 1 – 2
- Grade 3 – 4
- Grade 5 – 6
- Awesome Adults

The basic rules are:

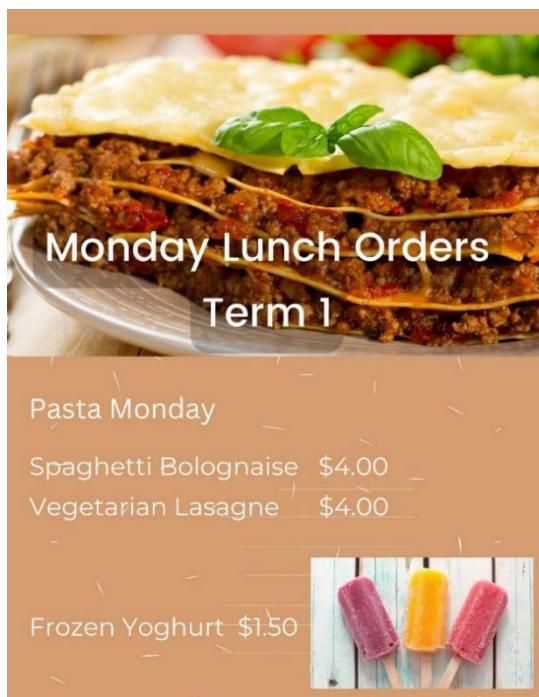
Each primary school or community group can determine their own Lego challenge winner with the following rules and conditions:

- Each Lego display to be no larger than 52cm x 52cm x 52cm, or no larger than four 32x32 lug Lego baseplates.
- Each Lego display must be an original or freelance design and not made from a Lego kit or instructions.
- Some adult help is allowed, but the Lego design should mainly be child's own design.
- There is a more comprehensive list of FAQs that you are welcome to get from Mrs Freeland.

Entry forms are being distributed at school and will also be emailed home in due course. We hope to see lots of creative Lego exhibits in our 2024 Brixhibition Competition. Happy building!

Melissa Freeland 😊

Monday and Friday Lunch Orders



Monday Lunch orders are given to home group teachers and the cost can be applied to your school account or cash can be sent with your child. Friday Subway orders are made online (see details below) and are delivered to the school prior to lunchtime.

IMPORTANT DATES

5th March

8th March

11th March

13-18th March

20th March

Friday 29th March -

Tuesday 2nd April inclusive

12th April

12th April

Seniors' Excursion to Seahorse World/ Tailrace Park

NIJSSA Swimming Carnival, Riverside from 8:30am

Public Holiday

NAPLAN

AGM – 7:30pm

Easter Break

School ANZAC DAY SERVICE

Term 1 ends

Please note that any notices we include in this newsletter for providers of activities that occur outside of the school, are provided only for the interest of families and do not carry any endorsement by the school.